



Portable Slit Lamp **Difference**

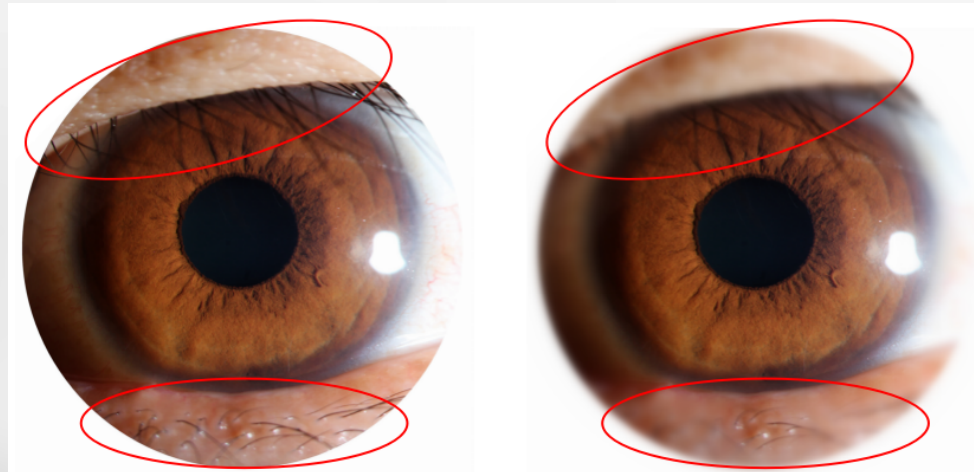
---Between SK' s and Keeler' s

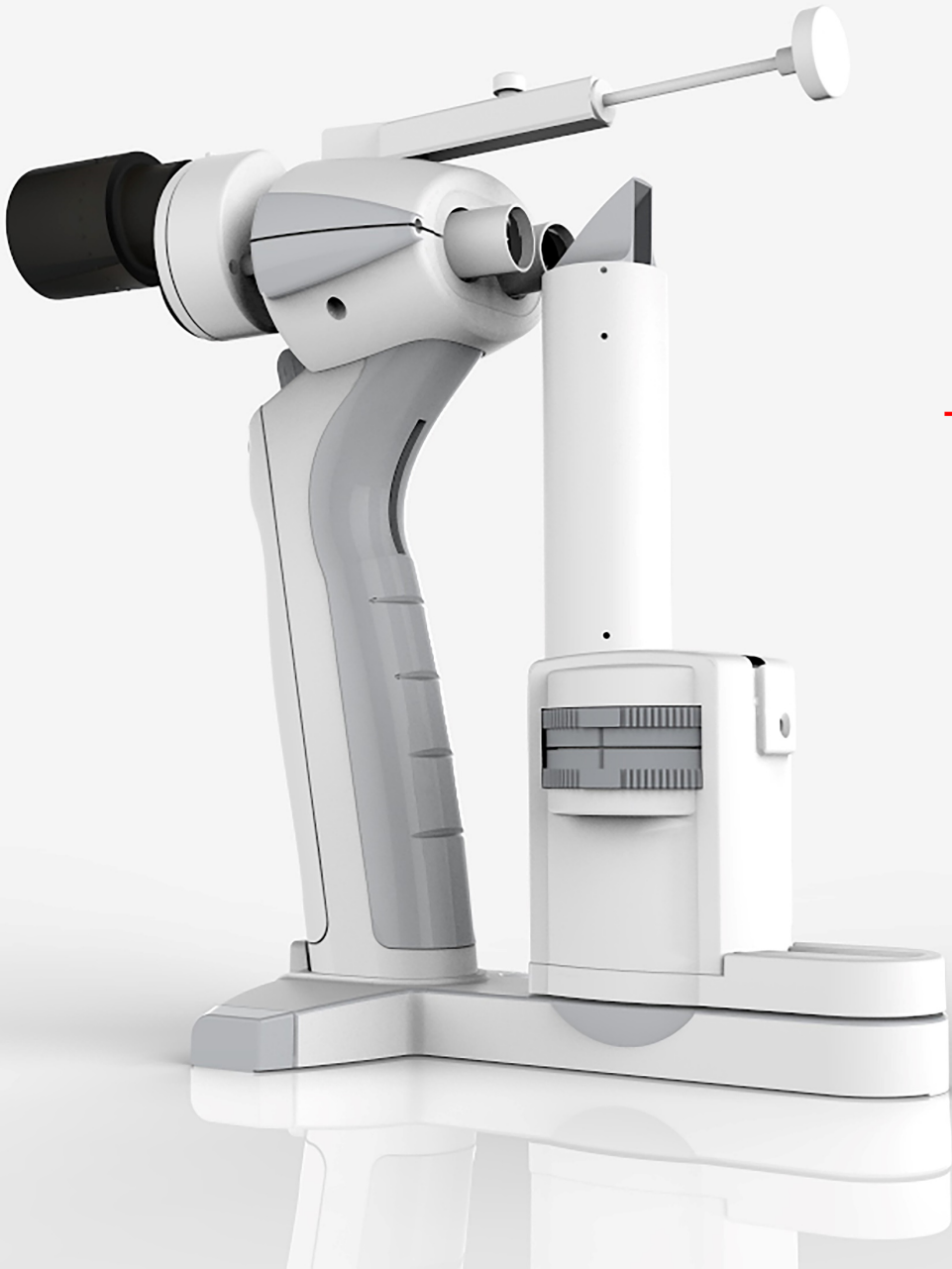


1.The Definition of Peripheral comparison

LS-1: The definition of Peripheral and Central are the same clarity.

Keeler: The definition of the Peripheral is poor than the central.





2.The Power Supply

LS-1:

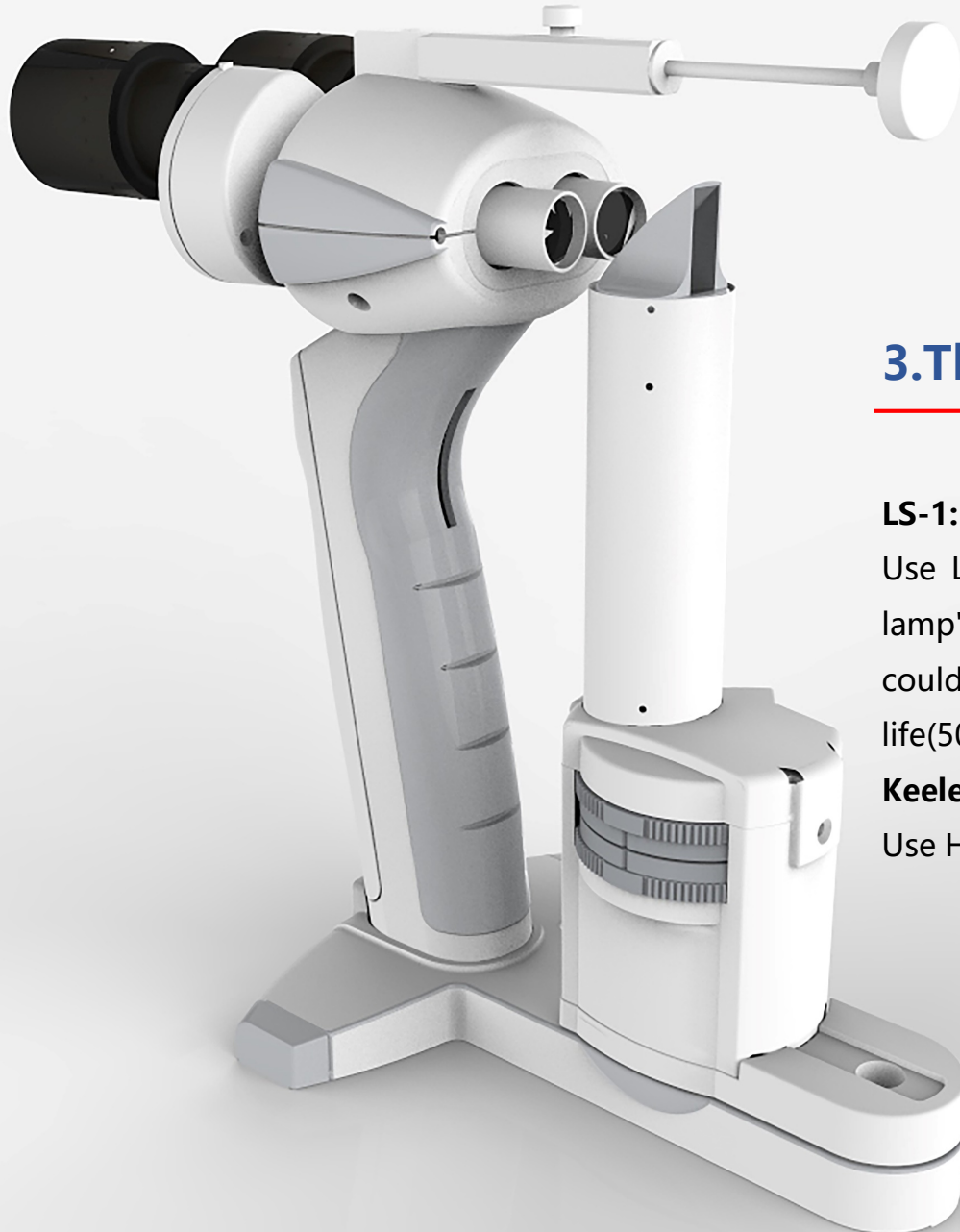
Multiple choices of Power Supply, No longer need to be afraid of no electricity

- (1)Suggest use two AA rechargeable batteries, it can be brought all over the world easily.
- (2)Can charge the slit lamp or supply power via any USB output device ,Such as: mobile phone charger, the computer's USB port ,portable power bank and so on.
- (3)Can use two AA dry batteries, which support continuous maximum brightness up to 2.5 hours or more. (Note: dry battery for a one-time use, can not charge)

Keeler:

Use special battery and charger, if the original battery is end life, need to buy spare part ,and also the charger is inconvenient to charge outdoors.





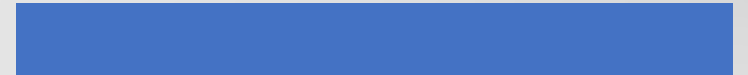
3.The Light Source

LS-1:

Use LED illumination of warm color, and the color temperature is 3500K, near to halogen lamp's color temperature. So it wouldn't affect the observation result of operator, and it could relieve operator's visual fatigue. Besides, LED lamp could keep stability for longer using life(50000hours),don't need to change light bulb.

Keeler:

Use Halogen lamp, need to change bulbs regularly.





THANKS